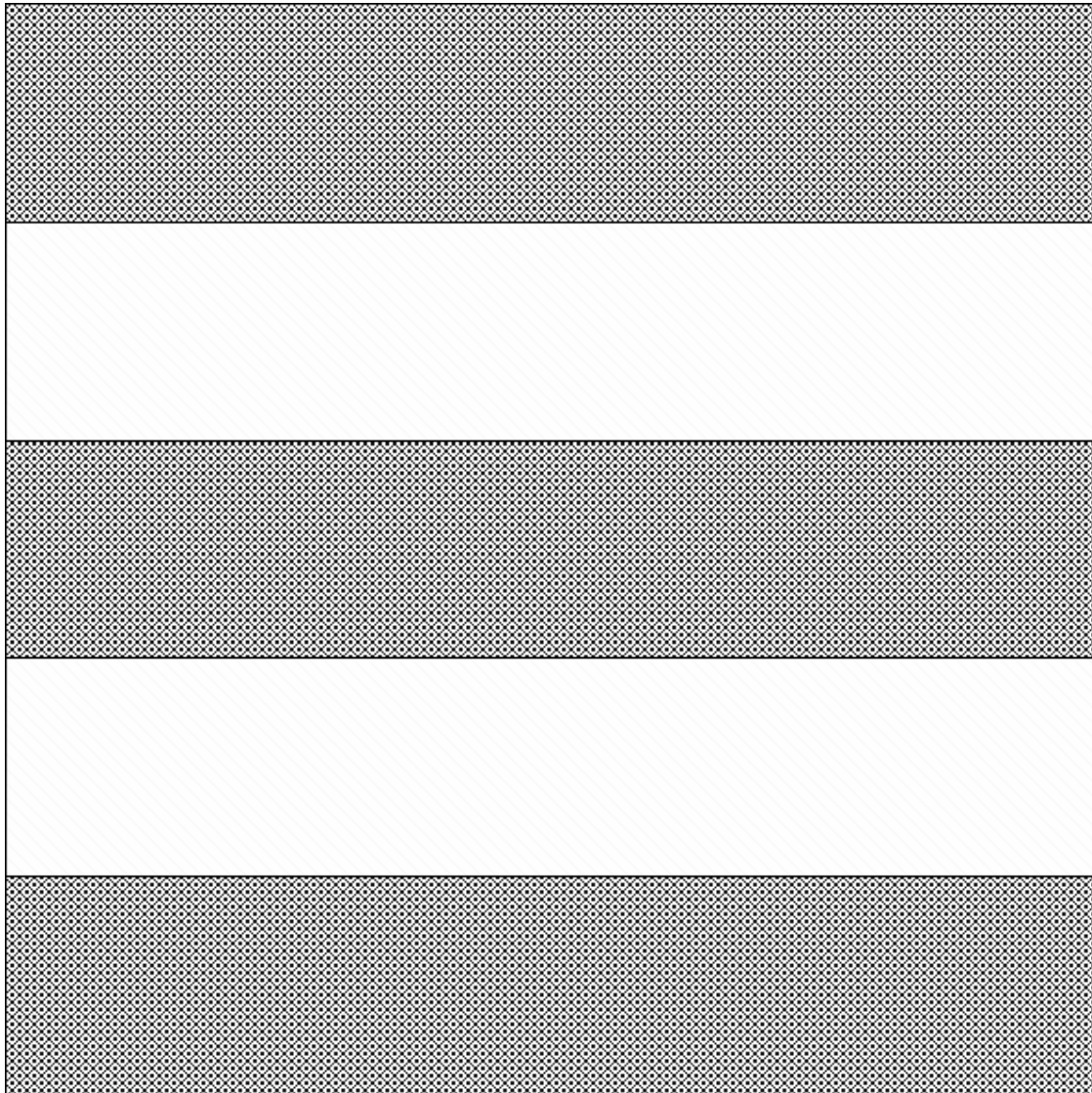


Mystery II – Geheimnis aus Schwaben

03A

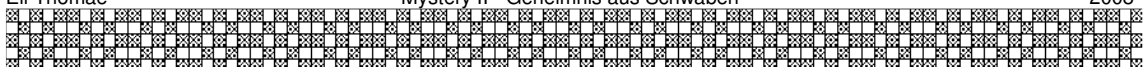


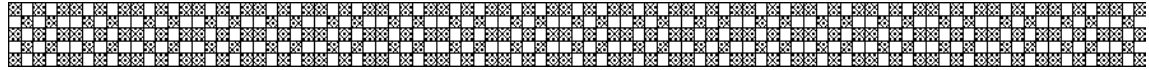
Block 03A

- 3 Streifen 4,5 x 16,5 cm
- 2 Streifen 4,5 x 16,5 cm

Uni
Reste

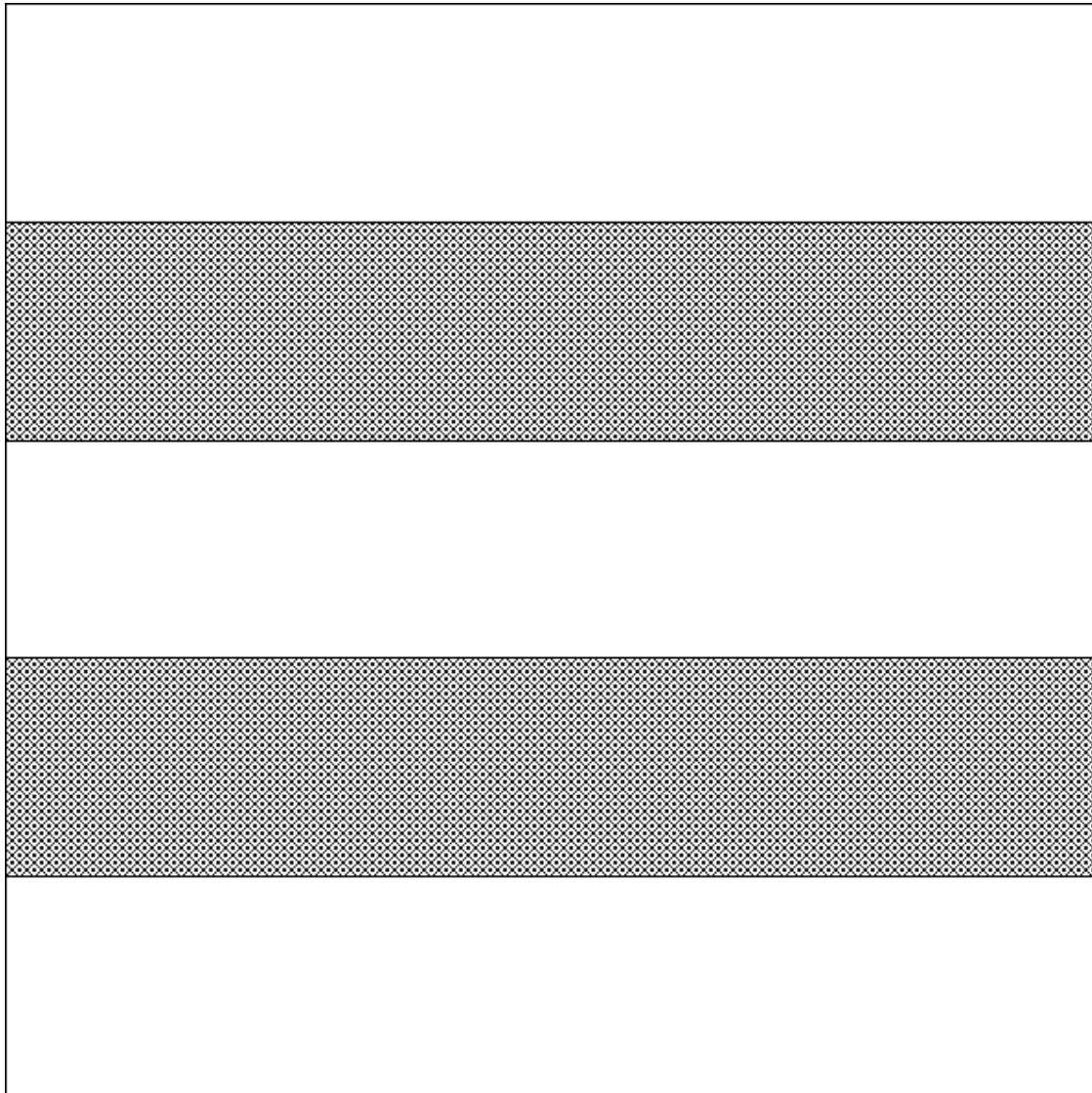
Daraus ein Streifentuch nähen.





Mystery II – Geheimnis aus Schwaben

03B

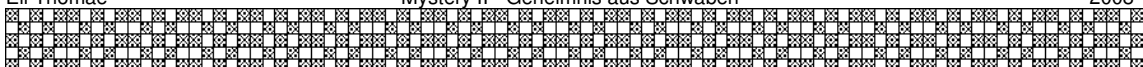


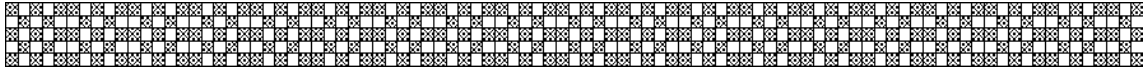
Block 03B

- 2 Streifen 4,5 x 16,5 cm
- 3 Streifen 4,5 x 16,5 cm

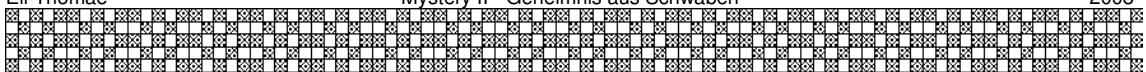
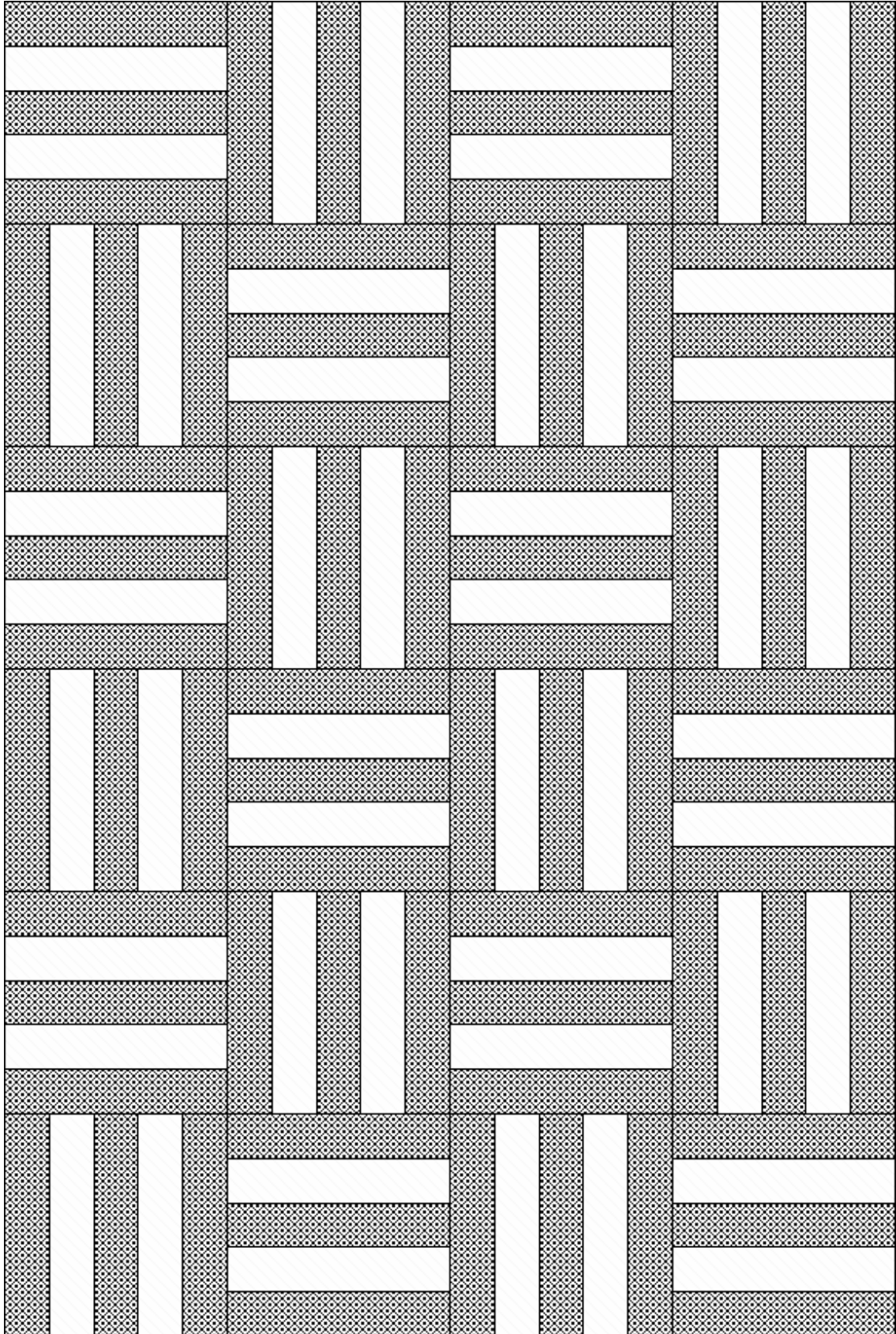
Uni
Reste

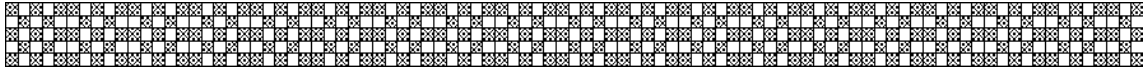
Daraus ein Streifentuch nähen





M 03A





M 03B

